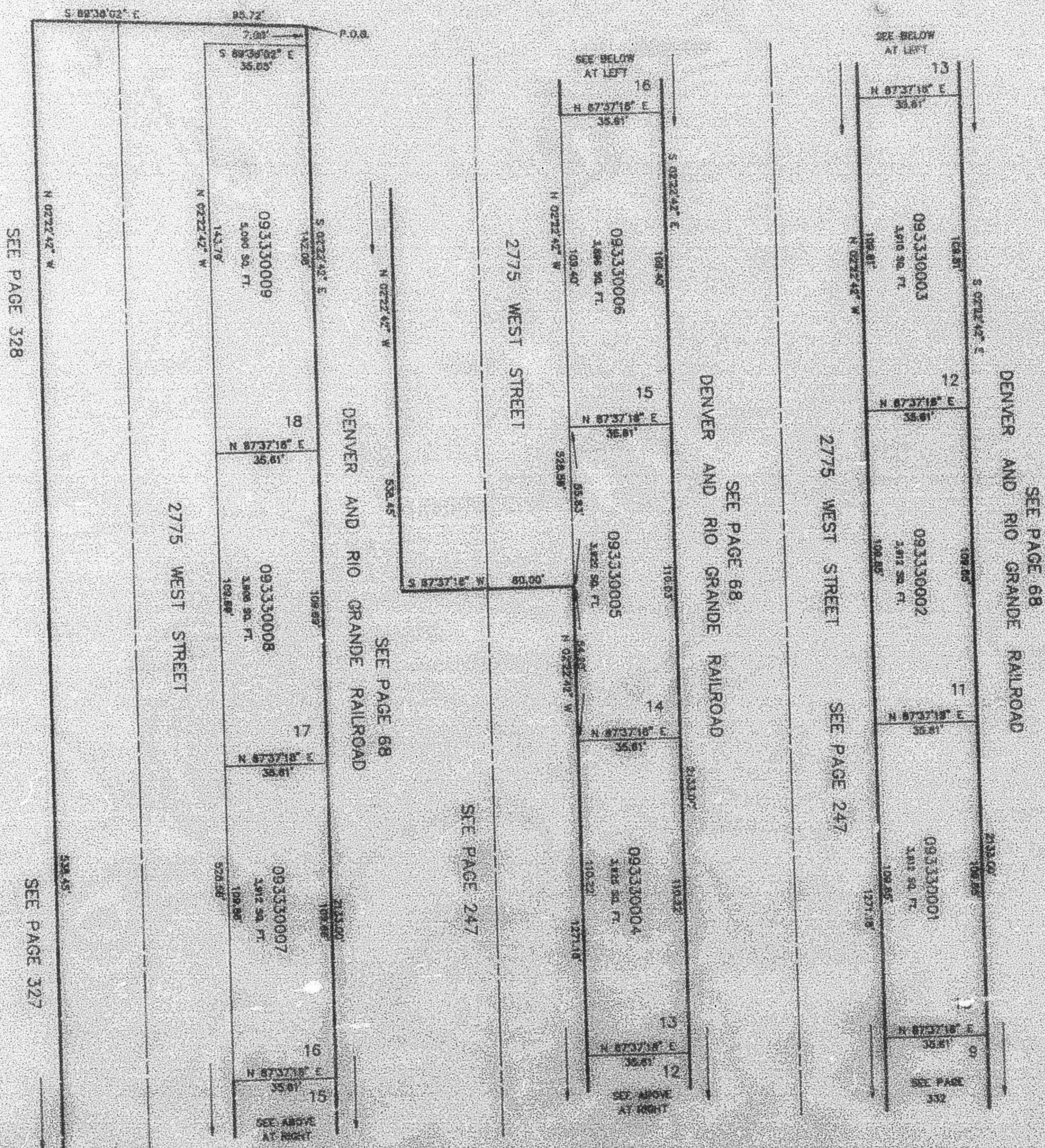


PART OF THE SE 1/4, SEC. 15, T.5N., R.2W., S.L.B. & M.
KENTWOOD GARAGES SUBDIVISION
 LOTS 10 - 18
 IN ROY CITY
 SCALE 1" = 30'

333

TAXING UNIT: -41

EXCEPT WHERE OTHERWISE
 SHOWN ALL LOTS OWNED BY:
 FIRST SECURITY MORTGAGE CO.



SEE PAGE 328

SEE PAGE 327

SEE PAGE 68

SEE PAGE 68

SEE PAGE 247

SEE PAGE 68

SEE PAGE 247

SEE PAGE 68

SEE PAGE 332

FOR COMPLETE END DATA SEE
 ORIGINAL RESECTION PLAT IN
 BOOK 31, PAGES 65 & 67 OF RECORDS